



ACCESS INFORMER
Security Solutions

Simplifying User Authorizations

EPFL
Innovation Park

Member of the
SAP® PartnerEdge®
open ecosystem

Microsoft
Partner



HOW COMFORTABLE ARE YOU WITH THE FOLLOWING STATEMENTS?

- ☒ Access to **sensitive information** and activities is adequately restricted
- ☐ **Segregation of duty** conflicts are monitored within and across key applications
- ☐ Access for employees that left the organization is **timely removed** across applications
- ☐ Employees transferring within the company do **not retain permissions** from previous roles
- ☐ You have **detailed analytics** to support organizational changes and security re-design
- ☐ You can **demonstrate compliance** and support audits/investigations with minimum effort



COMPANIES ARE STRUGGLING TO CONTROL AND MONITOR USER ACCESS

User authorization models are **complex** and **vary** per system

Facing a **growing portfolio** of applications driven by mobile and cloud

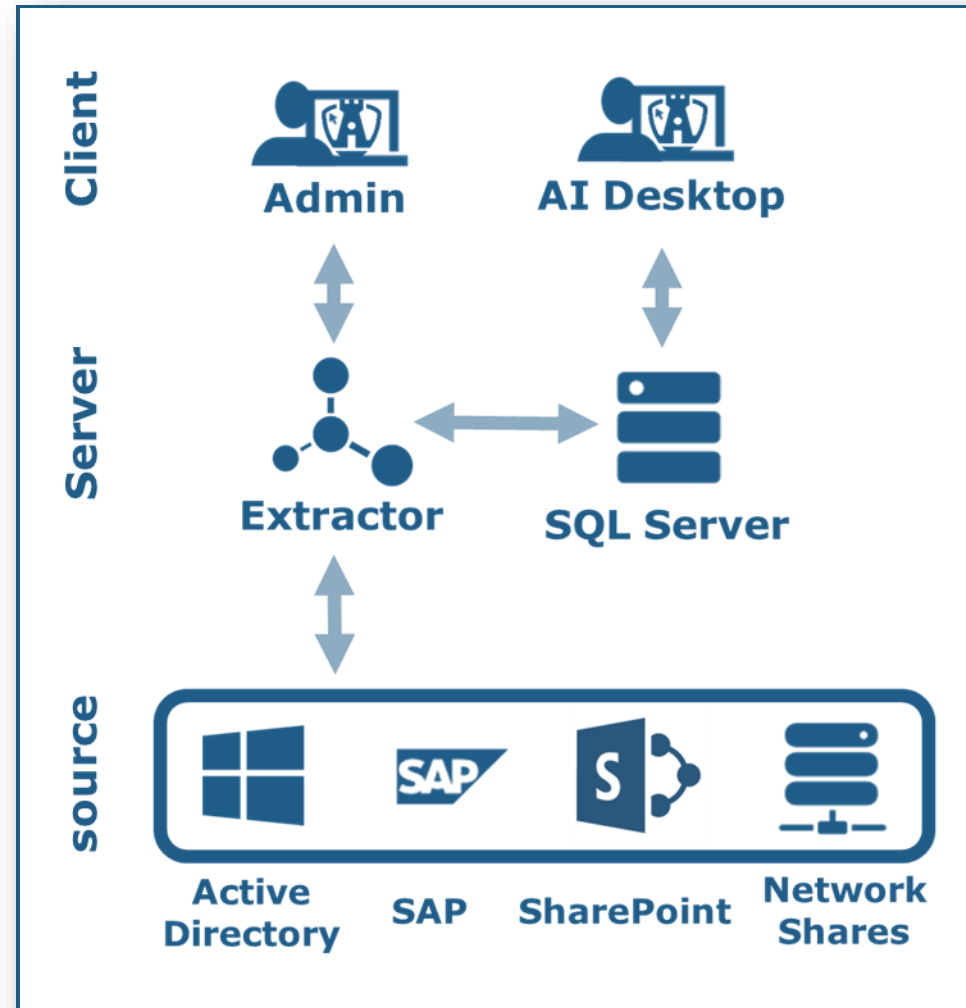
Existing reporting solutions:

- Have **limited reporting** across systems
- Require **elevated access rights**
- May **disrupt production** environments
- Face significant **scalability issues**





RETAKE CONTROL WITH ACCESS INFORMER



Collect and Centralize

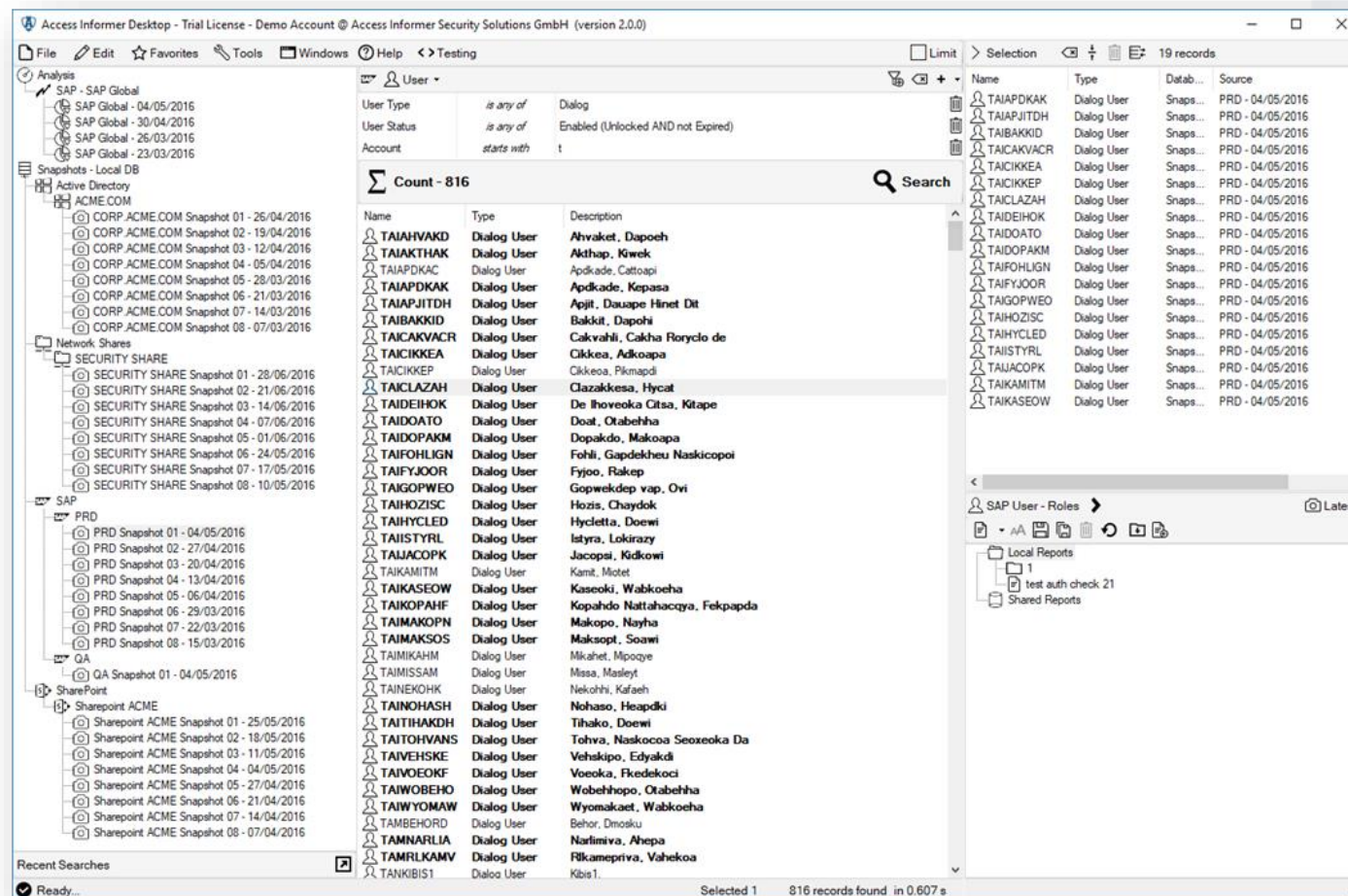
Extract snapshots of user authorizations to perform offline analysis without impacting productive environments



RETAKE CONTROL WITH ACCESS INFORMER

Explore and Report

Collect and Centralize



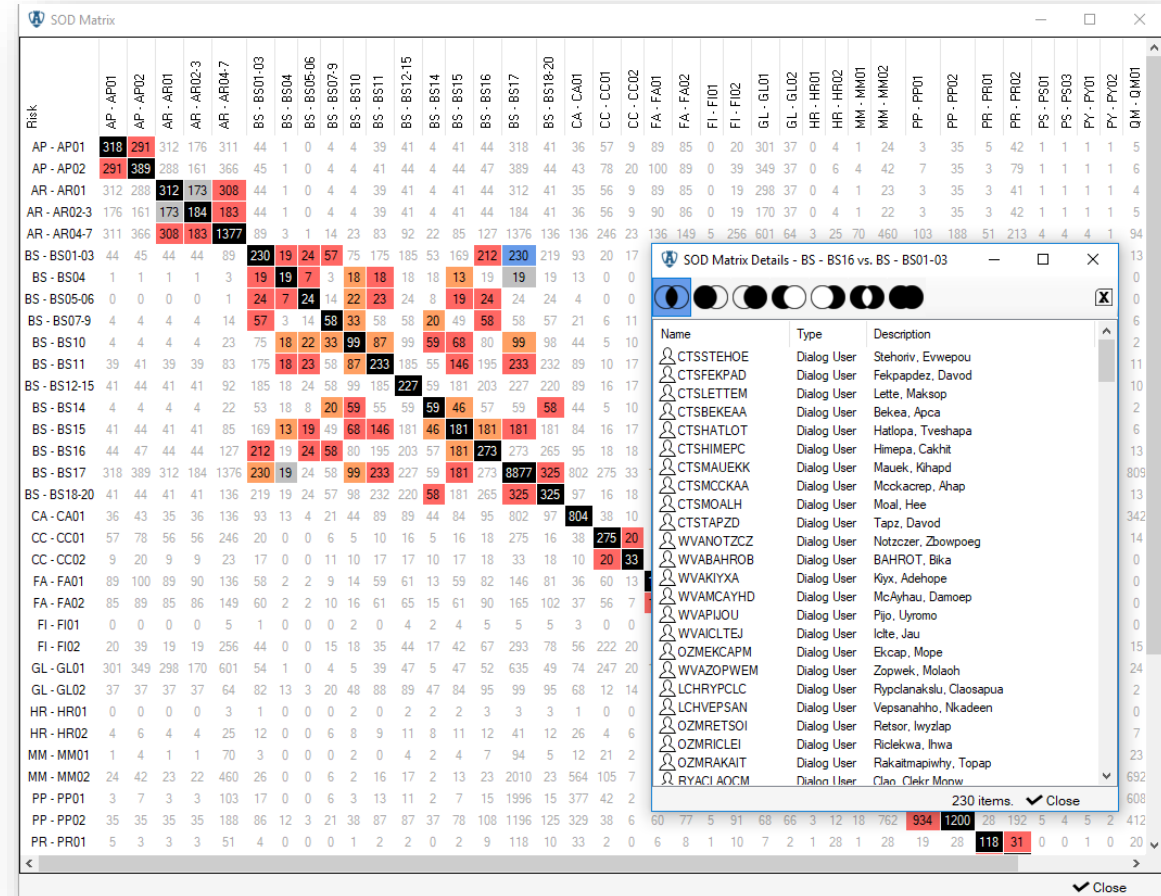
Powerful analytical platform with intuitive drilldowns, complex filters and pre-defined reports to support ad-hoc investigations

RETAKE CONTROL WITH ACCESS INFORMER

Classify and Prioritize

Explore and Report

Collect and Centralize



Apply a risk-based approach by enriching security asset information with documentation, tags and criticality



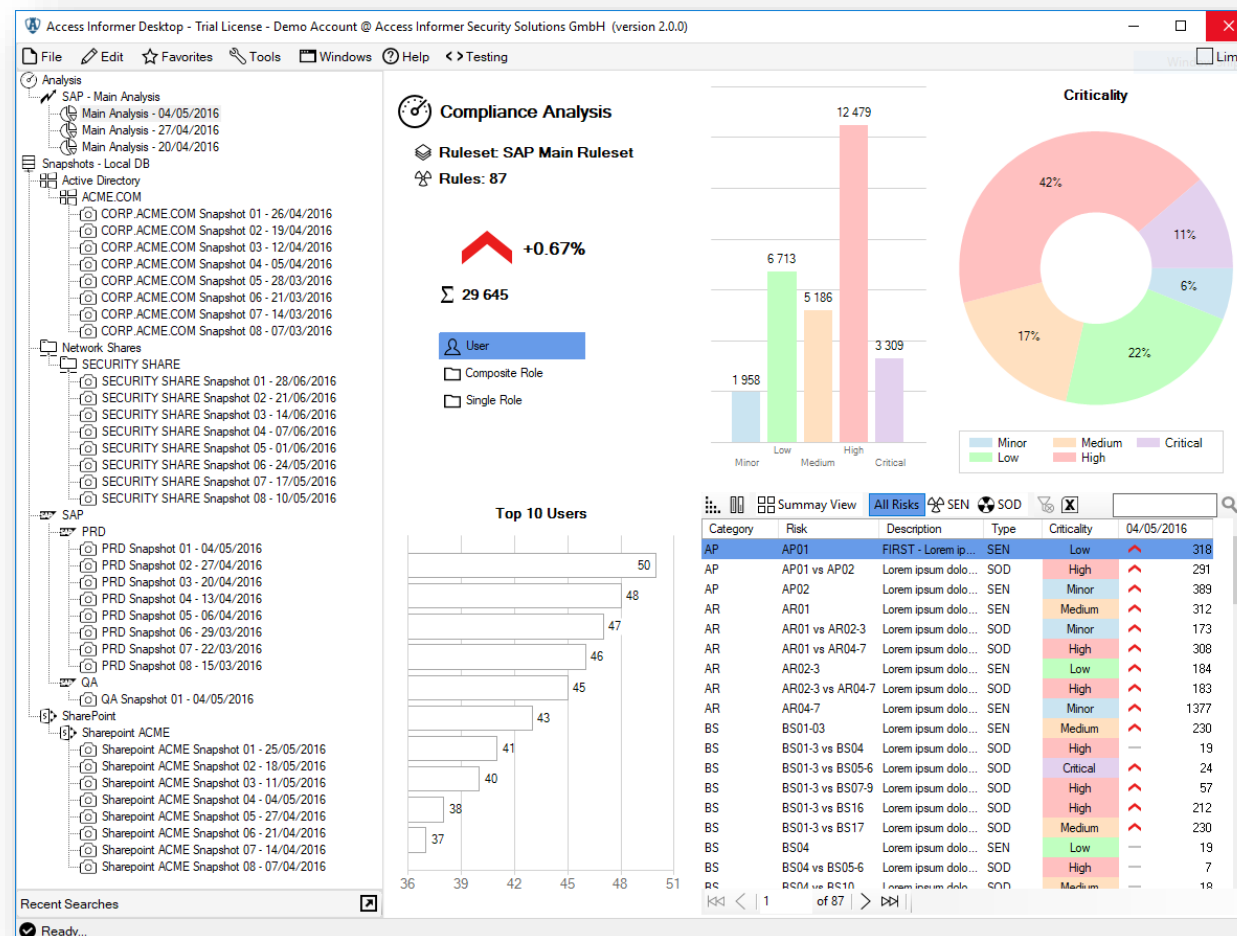
RETAKE CONTROL WITH ACCESS INFORMER

Monitor and Visualize

Classify and Prioritize

Explore and Report

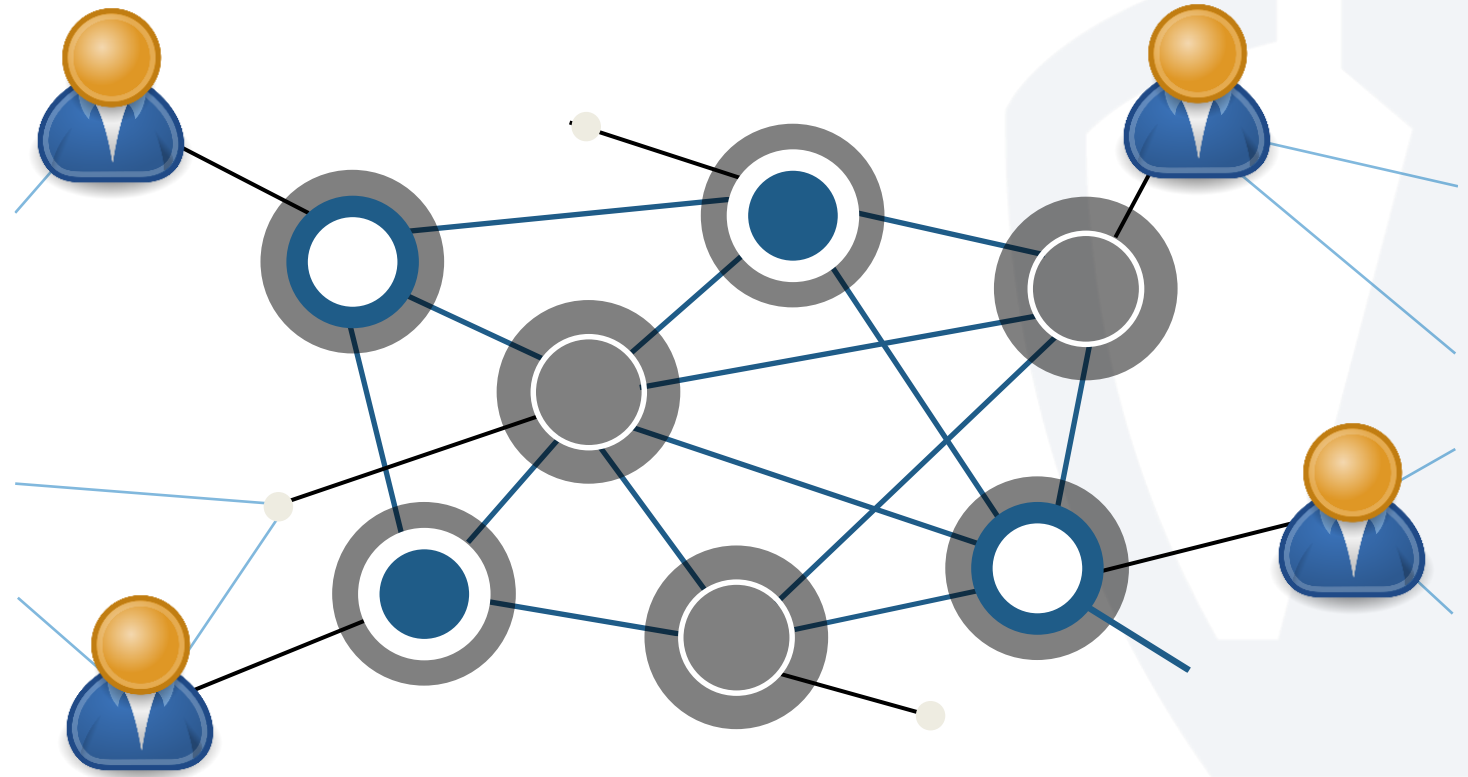
Collect and Centralize



Monitor compliance over sensitive access and segregation of duty conflicts with embedded dashboard and analysis



RETAKE CONTROL WITH ACCESS INFORMER



*Gain valuable insights to detect suspicious activities
and further protect company assets*

Alert and Recommend

Monitor and Visualize

Classify and Prioritize

Explore and Report

Collect and Centralize



KEY BENEFITS OF ACCESS INFORMER

- A **simple** and **effective** solution to collect, analyze and monitor user authorizations
- A **non-intrusive** solution requiring **read-only** access to target systems
- Improves **visibility** and **controls** over user authorizations **across key systems**
- **Reduces effort and complexity** of performing reviews of user authorizations
- **Provides detailed analytics** to support efforts to redesign and optimize security
- Monitor the evolution of **risk** and **compliance** with embedded dashboard

ACCESS INFORMER PROVIDES ADDITIONAL VALUE TO YOUR EXISTING LANDSCAPE

Identity and Access Management (IAM)

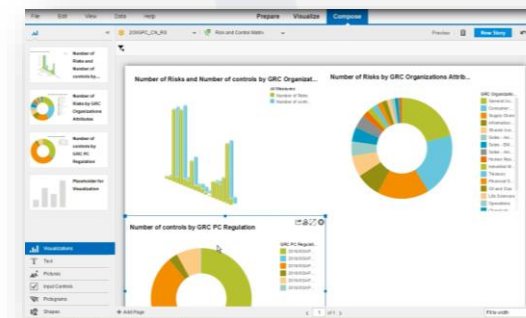
- Access Informer provide key analytics to **design** and **refine** role-based access
- **Reconcile** IAM role design with actual access

Governance, Risk and Compliance (GRC)

- **Drill down** from violations and SOD conflicts
- **Identify root cause** and **facilitate remediation**
- Perform **quality reviews** of compliance ruleset
- Retain snapshots to **demonstrate compliance**

Security Operation Center (SOC)

- **Continue investigation** of suspicious activities
- **Step back** from individual security events to gain a comprehensive view of access



SUBSCRIPTION & CONSULTING SERVICES



- Annual or project-based subscription
- Installation, updates and support
- Configuration of SQL Server or Azure SQL for the storage and retention of snapshots
- Configuration and scheduling of the extractions
- On-site and remote training on Access Informer
- Managed Extraction Service (optional)



- Perform quality reviews of compliance ruleset
- Accelerate remediation effort for sensitive access and SOD conflicts
- Development of custom .NET solutions integrated with SAP
- Customize Access Informer solution with additional connectors and requirements
- Review and optimize SAP licensing
- Provide training on SAP and AD Security



SECURITY ASSESSMENT SERVICE

- One week on-site security assessment for CHF 12,000
- Leverage Access Informer to extract user authorizations from SAP, Active Directory, network shares and SharePoint
- Perform the analysis together with a customer representative to demonstrate Access Informer capabilities
- Produce additional reports and analysis to support specific projects and initiatives from the customer
- Conclude the week with a presentation of the key observations and recommendations
- All reports generated during the week remain at the customer's disposal after the review
- The cost of the security assessment is deducted from the Access Informer subscription (if signed within 6 months)



A TEAM COMMITTED TO PROTECTING COMPANIES



Cyril Hauppert – Founder

- 20+ years' experience in IT Audit and Security in Sun Microsystems, KPMG, Philip Morris and Kraft Foods
- European Master in Management from ESCP Europe
- Attained Key Audit and Security certifications (CISSP, CISA, CISM, CGEIT, CRISC, and ABCP)



Michael Fluehler
Operations Advisor

Management Consultant
for the Financial Industry



Adam Koniuszewski
Business Development Advisor

Finance, risk management
and audit professional



Antonio Fontes
Technical Advisor

Application Security Expert
OWASP Geneva Chapter Leader

RECOGNIZED FOR SECURITY INNOVATION

“Complicated analysis of authorizations made easy, saving significant time and resources to reach conclusions and make informed decisions - a useful solution for both large redesign projects and day-to-day work. Access Informer also provides great return on investment and has enabled JTI to save 50 to 90% of the time usually spent performing an impact analysis prior to amending SAP roles.”



Jean-Luc Turin
Director SAP Security
Japan Tobacco International





WE HELP IT SECURITY PROFESSIONALS...



... SLEEP AT NIGHT